



**WISCONSIN  
LAND+WATER**

**66<sup>TH</sup>**

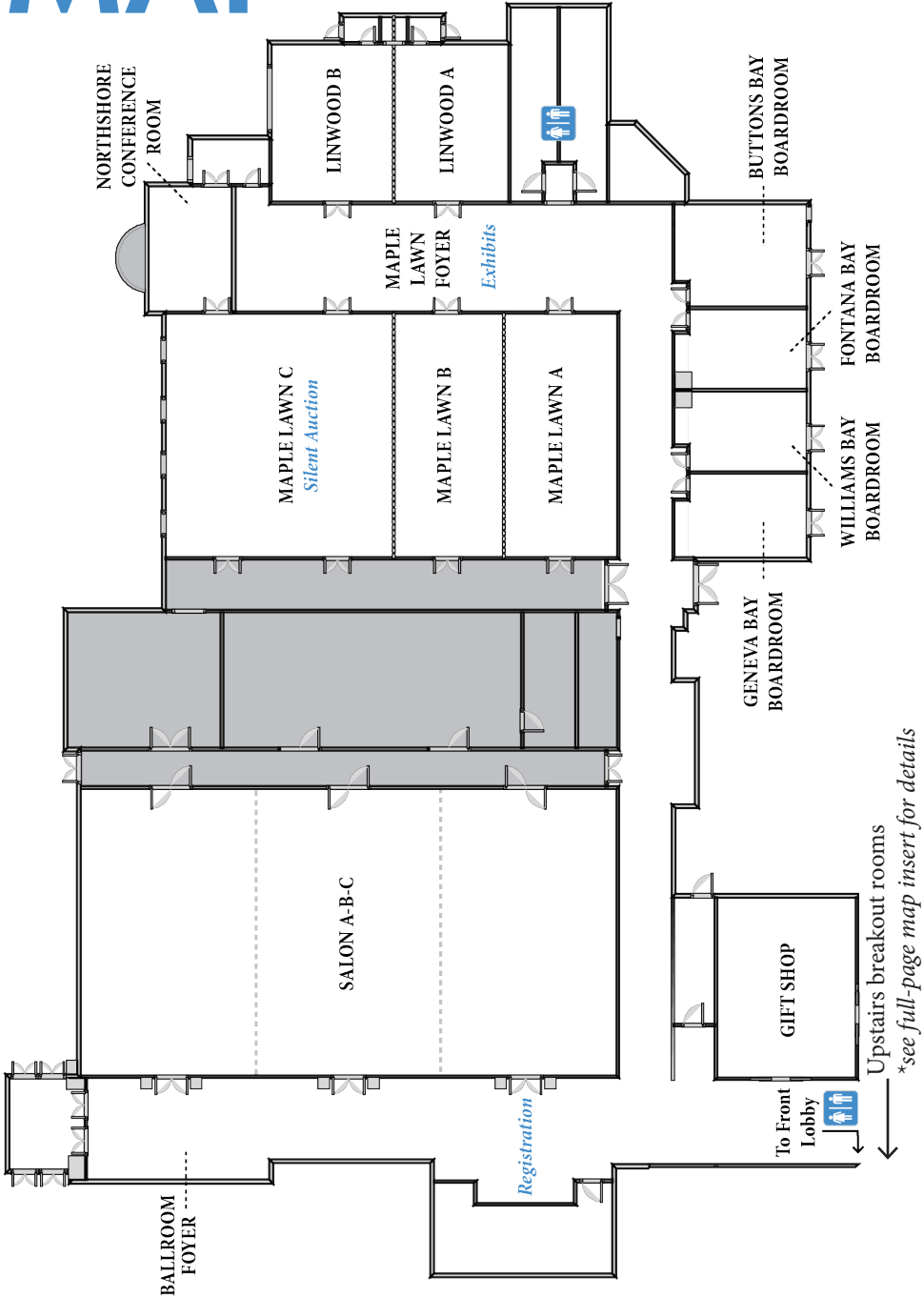


**ANNUAL  
CONFERENCE**

**MARCH 13-15, 2019 | THE GRAND GENEVA RESORT | LAKE GENEVA, WI**



# MAP



Upstairs breakout rooms  
\*see full-page map insert for details

# CONTENTS

4 Schedule at-a-Glance

5 Our Sponsors

6 Poster Contest & Silent Auction

7 Raffle & 50/50 Raffle

8 Wednesday: Overview

10 Wednesday: Breakout Sessions

12 Thursday: Overview

14 Thursday: Breakout Sessions

17 Friday: Overview

18 Friday: Breakout Sessions

20 Exhibitors & Acknowledgements

# SCHEDULE AT-A-GLANCE

## WEDNESDAY, MARCH 13

8:00-11:00	Youth Speaking Contest	1:45-2:45	Breakout sessions
9:30-11:00	WI Land+Water Board Meeting	2:45-3:15	Refreshment break
9:30-12:00	Silent auction item drop-off	3:15-4:15	Breakout sessions
9:30-4:30	Conference registration	4:15-5:00	Area Association meetings
11:00-1:30	Welcome: lunch buffet, keynote, youth speeches	5:00-7:00	Social, view exhibits, and silent auction
1:30-7:00	Silent auction, exhibits, poster judging	6:00-10:00	Shuttle bus downtown
		8:00	Guided star gazing

*Dinner on your own*

## THURSDAY, MARCH 14

7:00-8:00	Breakfast buffet	1:15-2:30	Breakout sessions
7:00-6:00	Conference registration, silent auction, poster judging, exhibits	2:30-3:00	Refreshment break
8:00-9:15	Breakout sessions	3:00-4:15	Breakout sessions
9:15-9:45	Refreshment break	4:15-6:00	Social - exhibits, 50/50 raffle, end of silent auction & poster judging
9:45-11:00	Breakout sessions	6:00-8:15	Dinner banquet and awards ceremony
11:00-12:45	Luncheon		

## FRIDAY, MARCH 15

7:00-8:00	Breakfast buffet		business meeting
7:00-10:30	Conference registration, pick up auction items		registration
8:00-9:00	Breakout sessions	10:45-11:45	Business meeting, raffle drawing
9:15-10:15	Breakout sessions	11:00	Check out of hotel room
10:15-10:45	Refreshment break,		

*Lunch on your own*

# OUR SPONSORS

## CONTRIBUTING SPONSORS



Petenwell  
and  
Castle Rock  
Stewards

## COMMUNITY SPONSORS



## FRIENDS OF CONSERVATION



# POSTER CONTEST JUDGING

## *LIFE IN THE SOIL: DIG DEEPER*

As part of the National Association of Conservation Districts' annual poster contest, students from across Wisconsin have designed posters around this year's theme: *Life in the Soil - Dig Deeper*.



These incredible posters on display are county and area winners, competing for the state title. State champions will move on to compete in their age group for national honors.

### **JUDGING INFORMATION**

*Voting begins Wednesday at 1:30 PM and closes Thursday at 6:00 PM.*

*Posters are on display in the Maple Lawn foyer.*

*Ballots and judging guidelines are provided in your registration folder.*

## SILENT AUCTION

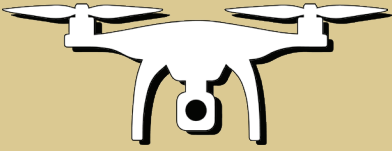
*Opens Wednesday at 1:30 & ends Thursday at 6:00 PM.  
Pick up your items between 7:00 and 10:30 AM on Friday.*

Drop off your items in Maple Lawn C between 9:30 and 12:00 on Wednesday, March 13. Be present on Friday to pay and pick up your items outside of Maple Lawn C. If you will not be here, make arrangements with someone to do this on your behalf.

*Proceeds from the silent auction benefit WI Land+ Water Youth Education programs.*

# RAFFLE

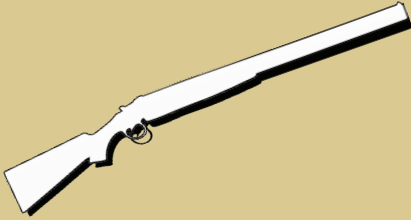
## THIS YEAR'S RAFFLE PRIZES:



Spark Controller Combo Drone



Guided Fly Fishing Trip



CVA Optima V2 Muzzleloader



\$50 Cabela's Gift Card



## CASH PRIZES

TWO  
\$100

ONE  
\$50

## TICKET PRICES:

1 FOR \$3 OR 4 FOR \$10

# 50/50 RAFFLE

The 50/50 raffle will be held during Thursday's social hour.

Winner will be selected during the awards banquet on Thursday evening.

*All raffle proceeds benefit the WI Land+Water Scholarship program.*



# WEDNESDAY: OVERVIEW

9:30-11:00

WI Land+Water Board Meeting  
*Linwood A*

9:30-12:00

Silent auction drop-off  
*Maple Lawn C*

11:00-1:30

Opening luncheon  
*Salons A-B-C*

## OPENING LUNCHEON

### Welcome

Host - Dave Solin  
*Board of Directors Chair, WI Land+Water*

### Winning Youth Speeches

Co-host - Eric Paulsen  
*Discover Wisconsin*

### Keynote Presentation

Tia Nelson  
*Managing Director, Climate at the Outrider Foundation*

Tom Krapf  
*Assistant State Conservationist, USDA-NRCS*

1:30-7:00

Silent auction, exhibits, poster  
judging open

1:45-2:45

### ***BREAKOUT SESSIONS***

Refreshment break, *Maple Lawn*

3:15-4:15

### ***BREAKOUT SESSIONS***



4:15-5:00

AREA ASSOCIATION MEETINGS

LAKE MICHIGAN

Evergreen I \*

LAKE WINNEBAGO

Fontana Bay Boardroom

NORTH CENTRAL

Evergreen II \*

NORTHWESTERN

Maple Lawn B

SOUTHEASTERN

Williams Bay Boardroom

SOUTHERN

Maple Lawn A

WEST CENTRAL

Linwood

WESTERN

Geneva Bay Ballroom

5:00-7:00

Social - visit exhibits, silent auction, poster judging

DINNER ON YOUR OWN!

Please note: A shuttle from the Grand Geneva and downtown is available between 6:00-10:00 PM. Uber is also available.

Downtown drop-off/pick-up point will be on the corner in front of the downtown Starbucks, 685 W. Main Street.

*A flyer with additional details can be found at the information table near registration.*

8:00

An Evening under the Stars  
East Parking Lot

Join educator John Heasley, Driftless Stargazing, LLC and amateur astronomer Lynda Schweikert for an evening under the stars. They will guide you on a tour across the sky. Highlights will be views of Mars, the craters on the crescent moon, star clusters and the Great Orion Nebula. In the event of cloud cover, they will try again Thursday night, same time, same place.

*\*Room located upstairs*

# WEDNESDAY: BREAKOUT SESSIONS

1:45-2:45

## **Technical Roundtable: Part A**

*Open participation, moderated by Drew Zelle, DATCP | Linwood*

The roundtable will focus on designing and repairing riparian and upland structures to endure intense hydrological events. See Part B (3:15-4:15 pm) for continuation of roundtable.

**(1 Engineering PDH)**

## **Administrative Staff Roundtable**

*Open participation, moderated by Kate Brunner, WI Land+Water | Galewood A\**

All staff are welcome to this moderated discussion on topics pertinent to running an efficient office, such as moving to a paperless environment, agency forms and reimbursements, and more.

## **What does divided government and a new governor mean for conservation policy in Wisconsin?**

*Matt Krueger, WI Land+Water; Shawn Pfaff, Pfaff Public Affairs | Evergreen I\**

Executive Director Matt Krueger and lobbyist Shawn Pfaff will discuss how county conservation policies fit into the current legislative session, WI Land+Water legislative priorities, and the role committed conservationists can play in advocating for them.

**(1 Professional Development CEU)**

## **Suck The Muck: Removal of Instream Legacy Sediments From Dorn Creek**

*Kyle Minks, Dane County LWRD; Jim Amrhein, WDNR | Maple Lawn A*

Legacy sediments can mask measurable improvements in water quality from conservation practices. This session will discuss the impacts of legacy sediment and strategies for removal, observed in the Dorn Creek case study.

**(1 Soil & Water Management CEU)**

## **Bale Grazing Basics**

*Adam Abel, USDA-NRCS; Serge Koenig, Sauk County CPZ | Maple Lawn B*

Covering how to determine if a farm is suitable for bale grazing (outwintering) and the planning that goes into setting up a successful system, this presentation will look at practices that have a proven track record to successfully allow producers to bale graze.

**(1 Crop Management CEU)**

3:15-4:15

### **Technical Roundtable: Part B**

*Open participation, moderated by Drew Zelle, DATCP | Linwood*

The second part of the roundtable will be a Q&A session where experienced staff answer engineering questions about designing and repairing riparian and upland structures.

**(1 Engineering PDH)**

### **Dark Sky Initiative**

*Driftless Stargazing LLC; Iowa County Astronomers | Maple Lawn A*

The increased and widespread use of artificial light at night is not only impairing our view of the universe, it is adversely affecting our wildlife, our environment, our safety, our energy consumption, and our health. This discussion focuses on preserving the special dark skies of Wisconsin.

### **How to Advocate CREP to Landowners**

*Brian Loeffelholz, DATCP; Katie Abbott, Iowa County LCD; Bob Micheel & Christina Mulder, Monroe County LCD; and others TBA | Maple Lawn B*

This presentation will review CREP along with its conservation and financial benefits. Conservationists from across the state will share their experiences and stories promoting CREP and what works when trying to get landowners interest in the program.

**(1 Crop Management CEU)**

### **Invasive Plants in Wisconsin**

*Kelly Kearns, WDNR | Evergreen II\**

This talk will cover the basics of identifying and controlling common invasive species, new species to watch for, slowing the spread, as well as working with regional Cooperative Invasive Species Management Areas and other local partners.

**(1 Crop Management CEU)**

### **Targeted Funding Opportunities with NRCS**

*Matt Otto, USDA-NRCS | Evergreen I\**

Learn about NRCS' landscape initiatives and regional conservation partnership program (RCPP) opportunities and how county, state, and other organizations can apply for uniquely targeted conservation funding.

**(1 Professional Development CEU)**

# THURSDAY: OVERVIEW

7:00-8:00

Breakfast buffet

7:00-6:00

Silent auction, exhibits, poster judging open

8:00-9:15

**BREAKOUT SESSIONS**

9:15-9:45

Refreshment break

9:45-11:00

**BREAKOUT SESSIONS**

*Guest Speakers:*

*Secretary Brad Pfaff  
Wisconsin DATCP*

*Assistant Deputy Secretary Todd Amb  
Wisconsin DNR*

**LUNCHEON**

11:00-12:45

1:15-2:30

**BREAKOUT SESSIONS**

2:30-3:00

Refreshment break

3:00-4:15

**BREAKOUT SESSIONS**

4:15-6:00

Social, visit exhibits  
*End of silent auction & poster judging\*\**

*\*\*Please pick up your county's posters outside Maple Lawn C after the awards banquet.*

# DINNER BANQUET & AWARDS

6:00-8:30

## ***BACK BY POPULAR DEMAND***

### **HOSTED BY**

Tracy Arnold

*Conservation Program Coordinator, Wood County LWCD*

Patrick Kilbey

*County Conservationist, Marquette County LWCD*

### **AWARDS**

1. Conservation Steward
2. Outstanding Supervisor
3. Outstanding Conservation Employee - Technician
4. Outstanding Conservation Employee - County Conservationist
5. Conservation Farm Family of the Year

## **WELCOME TO THE PARTY**



WI Land+Water welcomes Matt Krueger as the Association's new Executive Director. For the last decade, Matt worked to develop innovative conservation solutions and build diverse partnerships at the River Alliance. Known for his collaborative spirit, Matt enjoys spending time with his wife, daughter and dog, as well as being outside whenever possible, contemplating why he is a Vikings fan.

# THURSDAY: BREAKOUT SESSIONS

8:00-9:15

## **Like Han Solo and Chewbacca - Taking your Partnership to Light Speed**

*Brad Matson, Iron County LCC; Monte Osterman, Racine County LCC; Kathy Zeglin, Trempealeau County; and others | Maple Lawn A*

Successfully navigating a conservation department through the asteroid field of today's funding shortfalls and resource concerns requires respect, collaboration, and communication (even when you speak different languages). Hear lessons learned from experienced and savvy "pilots" in this stellar session on strengthening the LCC/LCD partnership.

**(1 Professional Development CEU)**

## **Health & Conservation: County-level partnerships to protect drinking water**

*Bruce Rheineck, WDNR; members of the Wood County and Rock County Health & Conservation Partnership | Evergreen I\**

Learn about Wisconsin's dependence on groundwater, statewide groundwater quality data results, as well as how local communities are working together to address health concerns in their drinking water through local partnerships.

**(1 Soil & Water Management CEU)**

## **The Challenge in Conservation: Ensuring our Natural Resources are Protected**

*Dr. Jerry L. Hatfield, NLAE | Evergreen II\**

Focusing on enhancing soils, improving water quality, and increasing climate resilience, this presentation discusses the vital importance of soil health.

**(1 Soil & Water Management CEU)**

## **The Cream of the Crop: NRCS Assistance for Producers**

*Josh Odekirk, USDA-NRCS | Maple Lawn B*

NRCS is responsible for providing technical and financial assistance to agricultural producers to treat resource concerns. This session will provide updates and the implications of recent changes to land conservation partners.

**(1 Soil & Water Management CEU)**

## **Addressing Wicked Water Problems through Systems Thinking**

*Jeremy Solin, ThinkWater | Linwood*

This session provides an introduction to systems thinking and showcases individuals and groups using systems thinking to address their local water issues.

**(1 Soil & Water Management CEU)**

9:45-11:00

## **Unleash their Inner Conservationist**

*Sarah McDowell & Ben Wojahn, Vernon County LWCD | Maple Lawn A*

Teaching kids various conservation practices and incorporating earth science

materials into learning can make a lasting impression on the next generation. Members of the WI Land+Water's Youth Education Committee will share fun ideas to engage students and teachers.

**(1 Professional Development CEU)**

### **How to Launch a Well Testing Program**

*Kevin Masarik, UW-Extension and UW-Stevens Point; Dan Masterpole, Chippewa County LCD | Linwood*

Incorporating lessons learned from work on groundwater and well water monitoring, this session provides examples of strategies and tools implemented by communities in Wisconsin.

**(1 Soil & Water Management CEU)**

### **Stream Restoration and Habitats; Streambank Easements and Maintenance**

*Curt Diehl, Dane County LCD; Jeff Hastings, Trout Unlimited; John Vosberg, USDA-NRCS | Evergreen II\**

This presentation shares the latest techniques utilized for designing and installing habitat for trout and non-game species, and covers EQIP funding and required documentation and streambank easements.

**(1 Engineering PDH / 1 Soil & Water Management CEU)**

### **Grazing a Path Forward: Using Goats to Control Invasive Plants and Brush**

*Cherrie Nolden, UW-Madison | Maple Lawn B*

With over 10 years experience and a herd of 360 goats, Cherrie will share her knowledge on the benefits and services goats provide, available programs, and more applied information for land managers.

**(1 Crop Management CEU)**

### **Communicating Conservation Across Wisconsin**

*Elliot Meyer, WI Land+Water; Paul Backhaus, Washington County LWCD; Kate Nelson, Kewaunee County LWCD | Evergreen I\**

Developing an effective voice is essential for rallying support for conservation work. Communication tools, like press releases, news articles, and social media, will all be discussed to help you learn how to better share your story.

**(1 Professional Development CEU)**

**1:15-2:30**

### **Local Approaches to Protecting Drinking Water**

*Tressie Kamp, Midwest Environmental Advocates; Kara O'Connor, Wisconsin Farmers Union | Linwood*

This interactive session will provide an overview of how communities are enacting local policies to protect drinking water and discuss key elements to consider in pursuit of enhanced groundwater protection.

**(1 Soil & Water Management CEU)**

**BREAKOUT SESSIONS CONTINUE ON NEXT PAGE**

**\*Room located upstairs**

### **Calming the Storm: Communicating During Conflict**

*Mindy Habecker & Jeff Hoffman, Dane County UW-Extension | Maple Lawn B*  
Participants will build active listening skills, learn how to constructively ask questions, and use dialogue to calm situations through mutual understanding.  
**(1 Professional Development CEU)**

### **Rebuilding Natural Infrastructure to Adapt to Extreme Weather**

*Kyle Magyera, Wisconsin Wetlands Association; Danielle Shannon, Northern Institute of Applied Climate Science | Evergreen II\**  
This interactive session will explore the landscape conditions, including loss of floodplain storage and degradation of wetlands, that greatly reduce watershed storage and contribute to downstream flood risks, erosion, and sedimentation.  
**(1 Soil & Water Management CEU)**

### **Implementing Statewide Performance Standards for Resource Protection**

*Mike Gilbertson, WDNR | Evergreen I\**  
This session will explore shared solutions between counties and agencies around implementing and adapting performance standards.  
**(1 Professional Development CEU)**

### **The Grand Solar Challenge: Communities Making Wisconsin Solar Ready**

*Peter Murphy, MREA | Maple Lawn A*  
Learn about the Midwest Renewable Energy Association's Grand Solar Challenge, an opportunity to facilitate solar market readiness and develop workforce training opportunities in conjunction with community-facing solar programs.

3:00-4:15

### **Manure into Magic: Manure Composting**

*John Rosenow, Cowsmo Inc.; Jason Fuller, Carbon Cycle Consulting | Evergreen II\**  
This presentation covers manure composting, organic rules and types of compost, as well as learning from the experiences of industry professionals.  
**(1 Nutrient Management CEU)**

### **Tips and Tricks for Stormwater Plan Review, Permit Issuance, and Enforcement**

*Alan Barrows, Waukesha County LCD; Jacob Schweitzer, LaCrosse County LCD | Maple Lawn B*  
Learn strategies to make the process easier for staff to process applications, turn reviews around quicker, and improve compliance.  
**(1 Crop Management CEU)**

### **Learning How to Listen: Citizen and Farmer Groups Supporting LCDs and Vice Versa**

*Lauren Nichols, Marathon County CPZ; Marty Weiss & Tony Peirick, Dodge County Farmers for Healthy Soil Healthy Water | Evergreen I\**  
This session shares how the framework and strengths of the Eau Pleine Partnership for Integrated Conservation and the farmer-led group in Dodge County builds



community capacity towards conservation.  
(1 Soil & Water Management CEU)

**Who Wants to Be a Public Official?! An Introductory Encounter with Open Meetings and Public Records Laws**

*Philip J. Freeburg, JD, UW-Extension Local Government Center | Maple Lawn A*  
This interactive session will introduce the basics of Wisconsin's open government laws using a game show format.  
(1 Professional Development CEU)

**Biological Indicators of Soil Health in Wisconsin**

*Matt Ruark, PhD, UW-Madison | Linwood*  
Learn how management practices (tillage, manure, and cover cropping) can influence these beneficial soil properties.  
(1 Soil & Water Management CEU)

## FRIDAY: OVERVIEW

7:00-8:00

Breakfast buffet

7:00-10:30

Conference registration, pick up auction items

8:00-9:00

***BREAKOUT SESSIONS***

9:15-10:15

***BREAKOUT SESSIONS***

10:15-10:45

Refreshment break, business meeting registration

10:45-11:45

WI Land+Water Annual Business meeting; raffle drawing  
*Salon A-B-C*

11:00

Hotel checkout

***Lunch on your own***

# FRIDAY: BREAKOUT SESSIONS

8:00-9:00

## **From Coal Mines to Jack Pines: The Effort to Reintroduce Elk to Wisconsin (session repeats at 9:00 AM)**

*Kevin Wallenfang, WDNR | Evergreen I\**

Wisconsin's elk reintroduction has evolved over more than 23 years. Thanks to the work of many great partners and agency staff, the population continues to grow and culminated into the first elk hunt in state history in 2018. Session will repeat.

## **I Wanna Rock!**

*Seth Ebel, Dane County LCD; Ryan Glassmaker, DATCP; Jason Weiker, Milestone Materials | Maple Lawn A*

This session provides information on working with quarry operators to properly gain access into sites and to stockpiles, and the differences in quarry materials.

**(1 Engineering PDH)**

## **Going with the Flow: Basics of Stormwater and Limnology**

*Jeremy Balousek, Dane County LCD; Carolyn Scholl, Vilas County LCD | Maple Lawn B*

Take a look at how Dane County uses performance based requirements to regulate construction site erosion control. Then cover the basics of limnology, which includes the various characteristics and functions of inland waters.

**(1 Soil & Water Management CEU)**

## **County Presentations: Dane and Oneida**

*Susan Sandford, Dane County LWRD; Michele Sadaukas, Oneida County LWCD | Linwood*

This session highlights three unique outreach/volunteer projects in Dane County and the nine-county native pollinator initiative across north central Wisconsin.

**(1 Professional Development CEU)**

## **Southwestern Wisconsin Groundwater & Geology Study: A multi-county effort to better understand private drinking water**

*Conservationists from Grant, Iowa, and Lafayette Counties; Ken Bradbury, WGNHS; Joel Stokdyk, USGS; and others | Evergreen II\**

Hear how Grant, Iowa, and Lafayette counties have joined into a multi-county project, the pros and cons to a regional approach, and what they hope to gain from a better understanding of their drinking water resources.

**(1 Soil & Water Management CEU)**

9:15-10:15

**From Coal Mines to Jack Pines: The Effort to Reintroduce Elk to Wisconsin**

*Kevin Wallenfang, WDNR | Evergreen I\**

Repeated session from 8:00 AM; see session description on page 18.

**Field Properties for Completing Soil Borings**

*Tim Weisbrod & Karla Petges, USDA-NRCS | Maple Lawn A*

This session will provide training for classifying basic engineering soil properties for the NRCS 313 Manure Storage standard, using Web Soil Survey to assist with data collection.

**(1 Engineering PDH)**

**From Big to Small, It Affects Us All: Addressing Drainage as Rural Areas are Developed**

*Brent Jalonen, Calumet County LWCD; Jeremy Freund, Outagamie County LCD | Evergreen II\**

Drainage and peak flow changes on rural properties due to development can have negative impacts on downstream properties if they are not addressed properly. This presentation will talk about experiences addressing these concerns in ordinances, a case study, and discussion of obstacles.

**(1 Soil & Water Management CEU)**

**A Journey of Organizational Culture Change and Elegant Leadership**

*Paul Daigle, Marathon County CPZ | Linwood*

Paul will share the story of how elegant leadership paved the way for a culture change in their county's combined Conservation, Planning and Zoning Department, where staff now work as a team and find a sense of purpose and joy in the work they do.

**(1 Professional Development CEU)**

**Wild Rice: Harvesting and Conservation Opportunities**

*Ben Wojahn, Vernon County LWCD; Jason Fleener, WDNR | Maple Lawn B*

This session will discuss wild rice harvesting and the values of wild rice to people, wildlife, and water quality. Conservation challenges and opportunities that counties may be engaged in will also be discussed.

**(1 Professional Development CEU)**

**THANK YOU**

participants, sponsors, and agency partners for helping  
make our 66<sup>th</sup> Annual Conference possible!

We hope to see you again next year  
March 4-6, 2020  
at the KI Convention Center in Green Bay, WI.

## OUR EXHIBITORS

*Center for Watershed Science &  
Education - UW Stevens Point*

*Midwest Environmental Advocates*

*Pheasants Forever National Seed  
Program*

*Transcendent Technologies, LLC*

*USDA-NRCS*

*UW-Extension Water Action Volunteers*

*WellIntel, Inc.*

*Wisconsin DNR*

*WI Land+Water Youth Education  
Committee*

## OUR PARTNERS



**National Association of  
Conservation Districts**

## OUR STAFF

*Christina Anderson*

*Source Water Protection Program Manager*

*Kate Brunner*

*Standards Oversight Council Program Manager*

*Matt Krueger*

*Executive Director*

*Elliot Meyer*

*Communications & Media Coordinator*

*Penny Pohle*

*Conservation Training & Membership Services Coordinator*

*Chris Schlutt*

*Training & Outreach Program Coordinator*

*Kim Warkentin*

*Operations Manager & Youth Education Director*