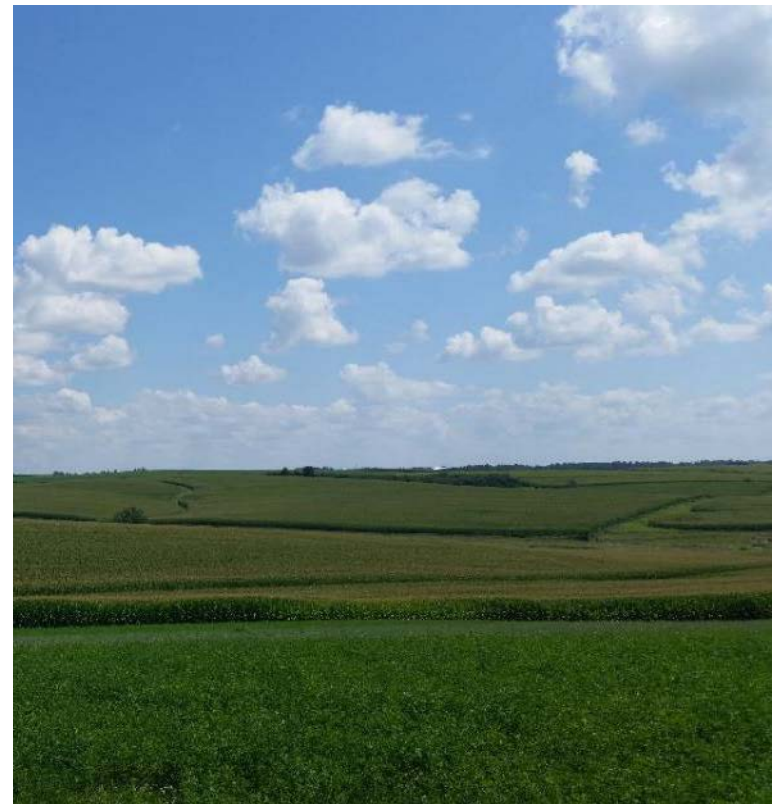
A landscape photograph showing a green field in the foreground, a brown field in the middle ground, and a distant building under a blue sky.

**DATCP Bureau of
Land and Water
Resources**

WHAT DO WE DO?

- Reduce agricultural nonpoint source pollution
- Protect water quality
- Preserve farmland



MAIN ACTIVITIES

- Financial Assistance
- Technical Assistance
- State Conservation Program Collaboration





FINANCIAL ASSISTANCE

LAND AND WATER RESOURCE MANAGEMENT PLAN (LWRM)

- Identify and prioritize resource issues
- Establish goals and activities
- Annual workplan



<https://www.youtube.com/watch?v=GbTerLf4NgY&feature=youtu.be>

SOIL AND WATER RESOURCE MANAGEMENT GRANTS (SWRM)

- Cost share to implement plan: ~\$6 million
 - ~\$3.8 million for structural practices
 - ~\$2.2 million primarily for nutrient management
- Staffing: ~\$9.4 million



How do counties get the grants?

Grant Allocation Process

▶ 🔊 2:34 / 6:04



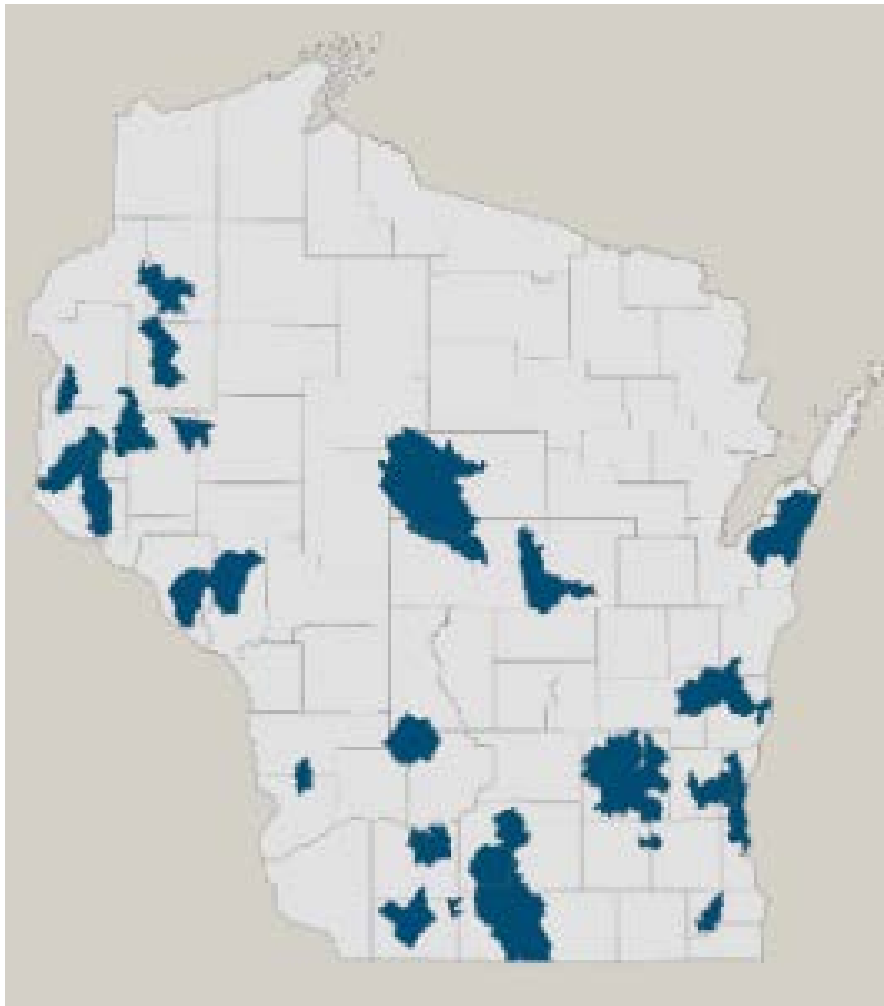
<https://www.youtube.com/watch?v=62SPkBgnYSM&feature=youtu.be>

OTHER GRANTS AVAILABLE TO COUNTIES

- Bond Reserve Fund: address farm discharge and Notice of Intent (NOI) project
- Nutrient Management Farmer Education Grants (NMFE)



PRODUCER-LED WATERSHED PROTECTION GRANTS (PLWPG)





TECHNICAL ASSISTANCE

CONSERVATION ENGINEERING SERVICES

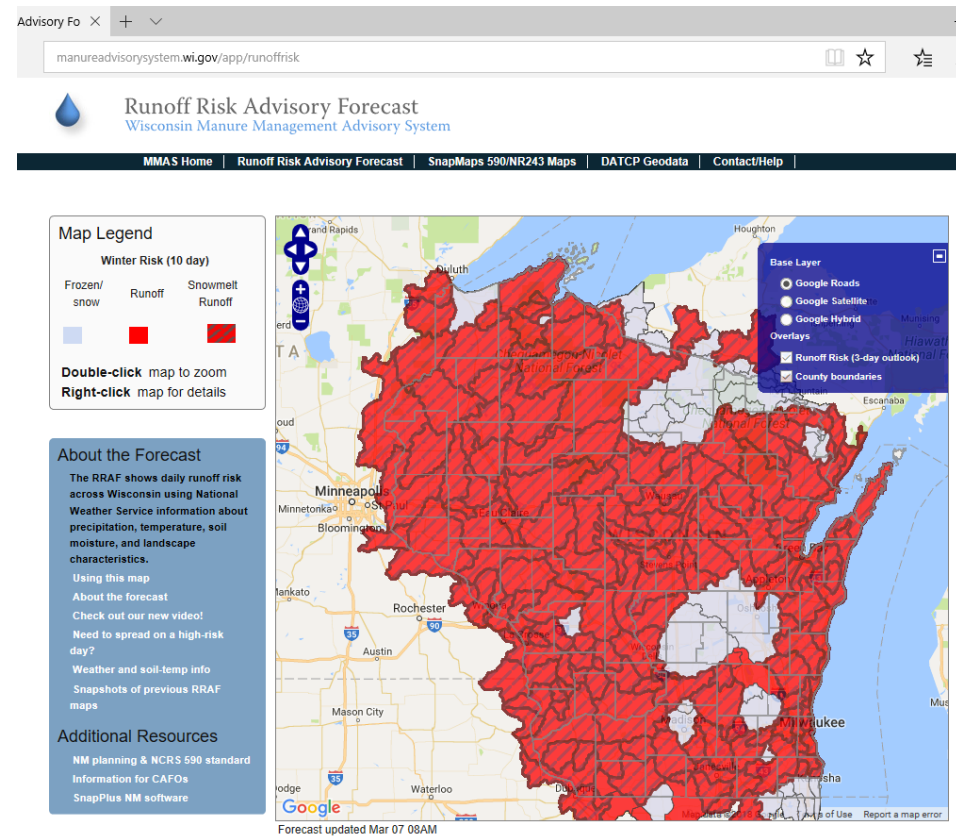
■ Certification

■ Training



NUTRIENT MANAGEMENT PLAN ASSISTANCE

- Support farmer training
- Train the Trainer
- Runoff Risk Advisory Forecast

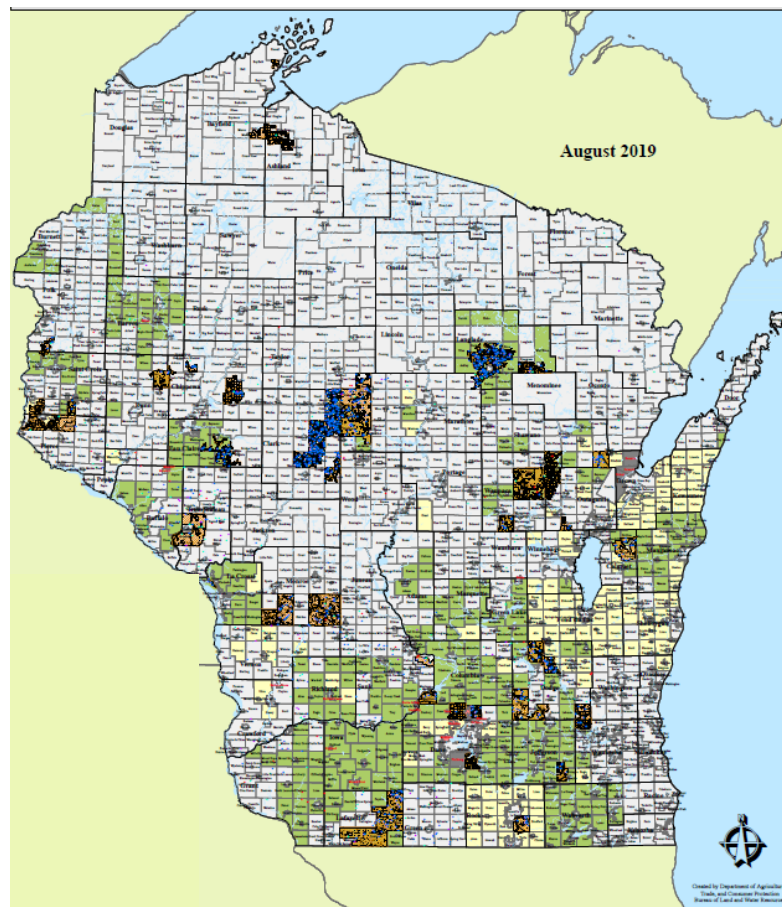
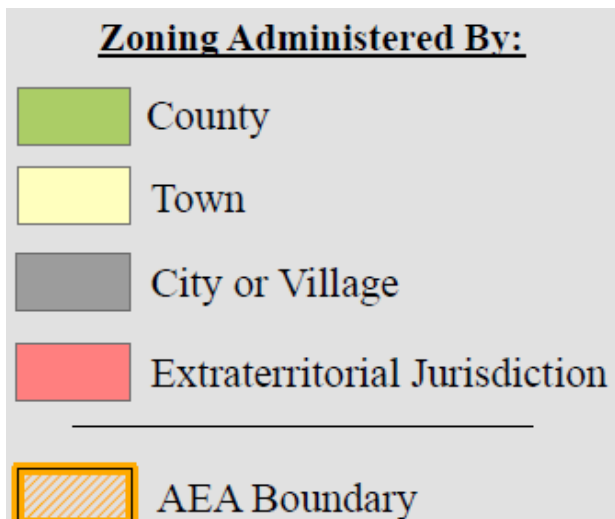




CONSERVATION PROGRAMS

FARMLAND PRESERVATION PROGRAM (FPP)

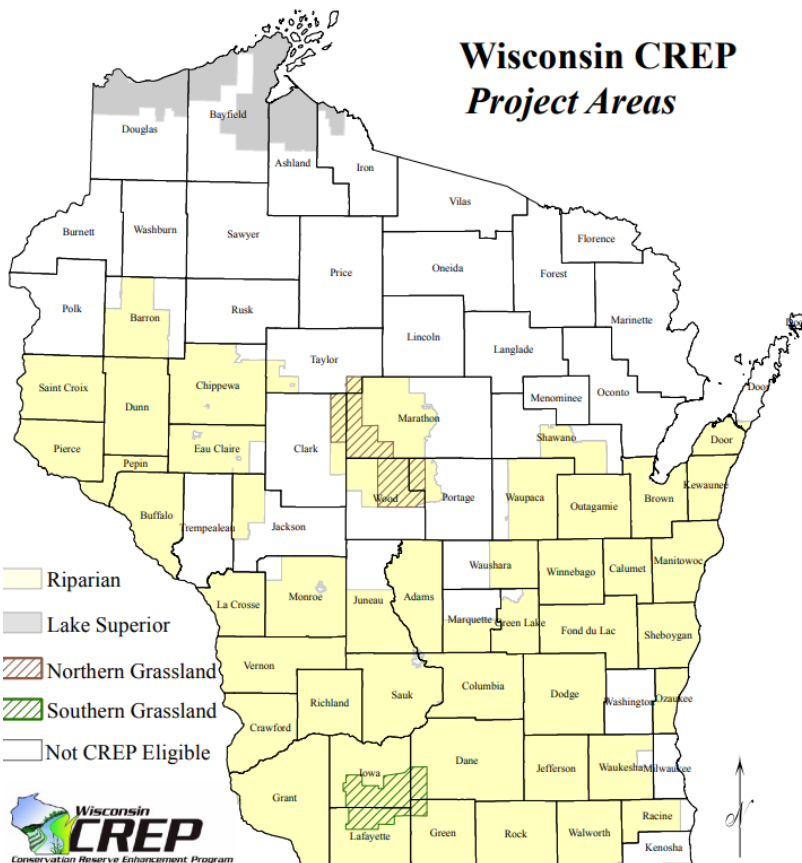
- Encourages conservation
- Provides tools to protect farmland



CONSERVATION COMPLIANCE

- Meets standards
 - Certificate of Compliance (COC)
- Does not meet standards
 - Notice of Noncompliance (NON)
 - Cancellation of NON

CONSERVATION RESERVE ENHANCEMENT PROGRAM (CREP)



- County, state, federal partnership
- Riparian areas & wetland restoration



LOCAL ORDINANCES

- Review/guidance and approval/certification in some cases
 - Farmland preservation
 - Manure storage
 - Livestock related
 - Local soil and water management practices



WISCONSIN FARM CENTER

Services are FREE and confidential!

- Farm financial consulting
- Farm succession planning
- Farm business entry or exit strategies
- Mediation and arbitration
- Veteran farmer assistance and outreach
- Herd-based diagnostics

Phone: 1-800-942-2474

Email: farmcenter@wisconsin.gov

Web: FarmCenter.wi.gov



Land and Water Resources Bureau

Coreen Fallat

Coreen.Fallat@wisconsin.gov